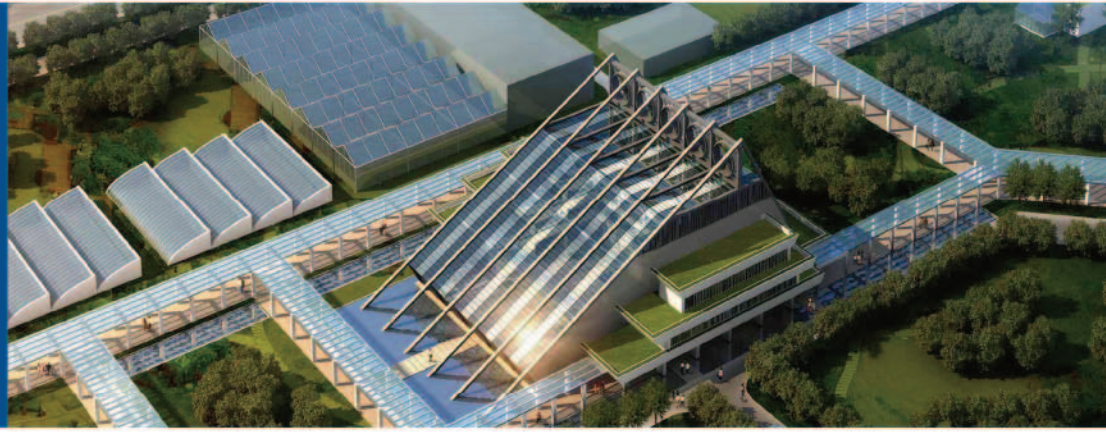




Building Integrated Photovoltaic (BIPV) Solutions



ENN BIPV Series and customized modules are recommended to promote the aesthetically pleasing performance.

ENN BIPV System



Rooftop (back tempering glass modules)



Façades (insulated and transparent modules)



Skylights (laminated and transparent modules)



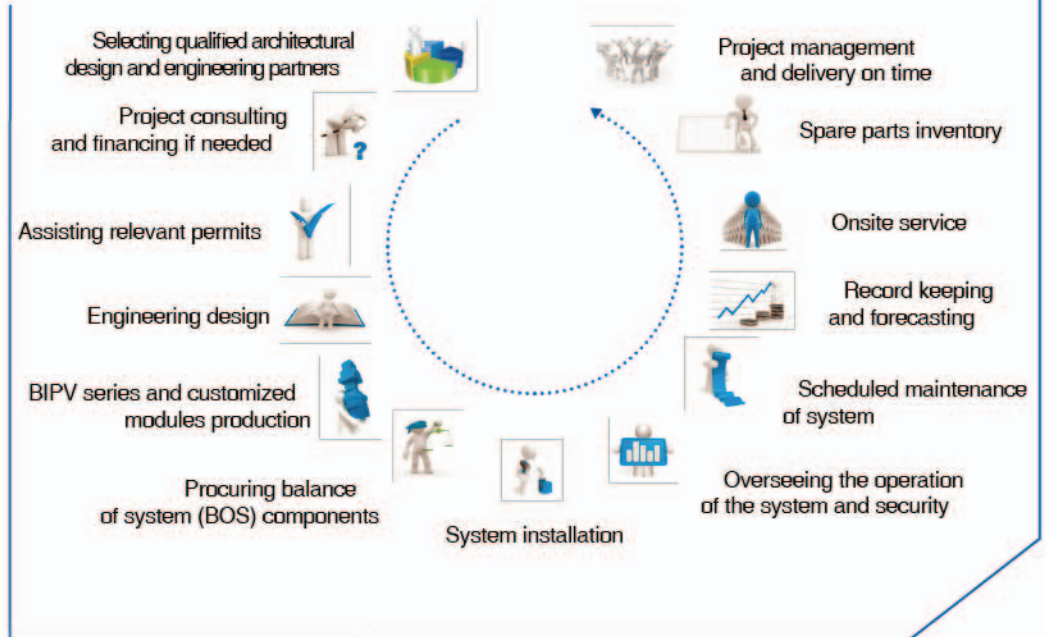
Sunshade systems Windows

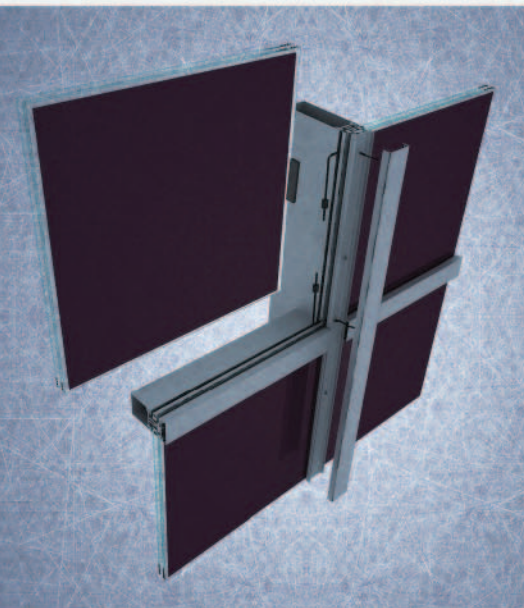
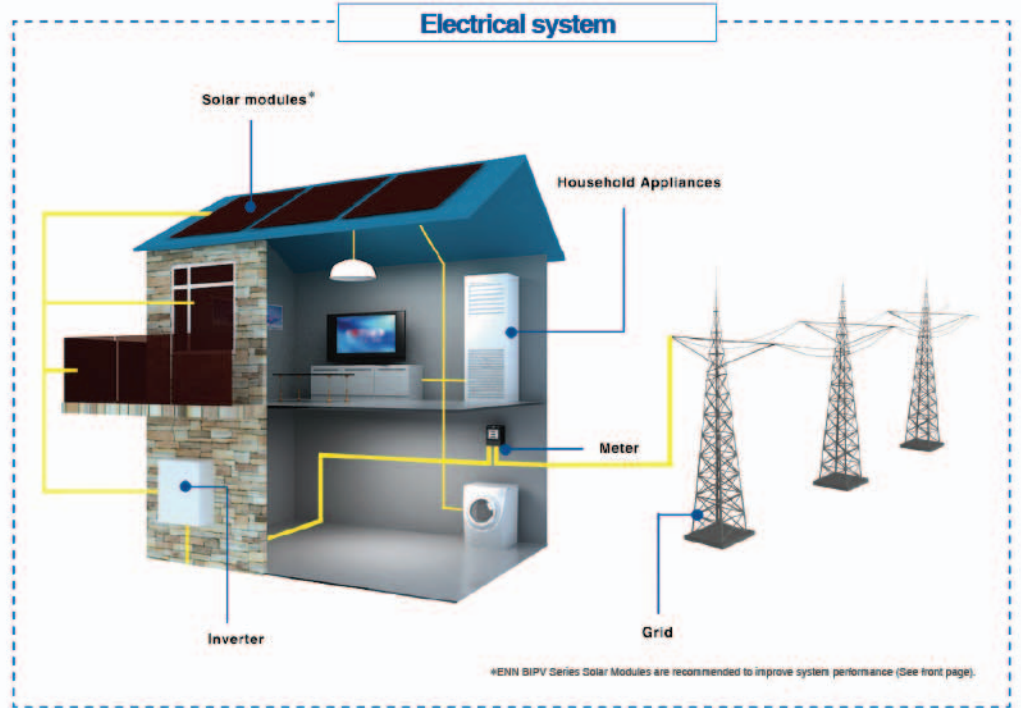


Fences

- ✓ Aesthetically pleasing PV system not only generates power, but also provides transparent, insulated and shady etc. effects.
- ✓ Customized solar modules and solutions can meet each customer's individual needs.
- ✓ Versatility allows for long service life and easy installation on building façades, awning, windows, skylights, fences and customized parking structures.
- ✓ Environment friendly without any toxic substance.

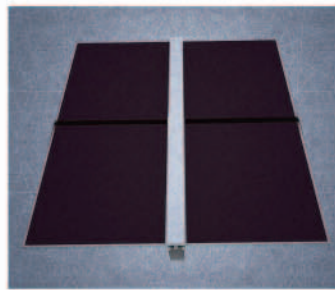
ENN Solar Energy's cost-effective, aesthetically pleasing solar panels can beautify a building and reduce its environmental impact. Our Building Integrated Photovoltaic (BIPV) solutions are an architect's dream. We can customize the tint, size and shape of our solar panels to seamlessly incorporate them into a building's façade or create stylish power generating additions that can enhance traditional architectural design. Environmentally-friendly production without toxic material contributes to a sustainable lifestyle.





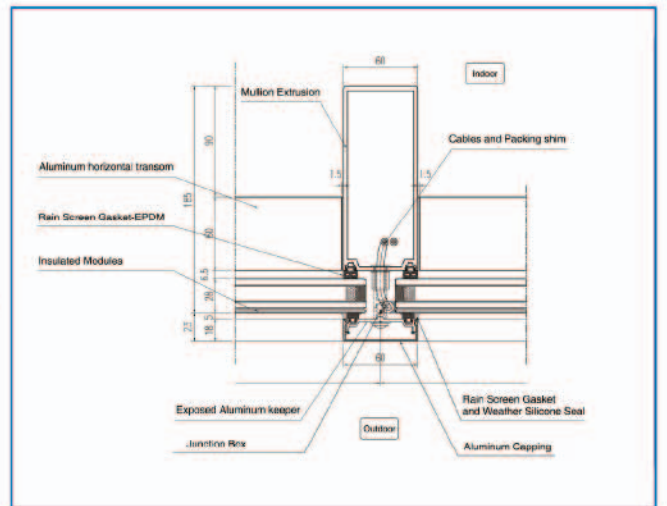
↑ Exposed frame
with conductor arrangement hidden in frame.

Key joint: exposed and semi-exposed frame



↑ Semi-exposed frame

→Notes:
ENN Solar's Insulated Modules lateral use 3.2mm tandem junction silicon panel, 1.14mm PVB+6mm heat-strengthened clear glass+12A insulated layer+6mm tempered clear glass, which all can be made upon customers' request.



↑ Cross section on junction box



Reference cases

Skylight by ENN Solar Energy	
Modules	ENN BIPV AQF-120
Quantity	180 pieces
Rated Power	21 kw
Power output within 25 years	655332 kwh
Sustainability	Saving approximately 692 tons of carbon dioxide in 25+ years.